

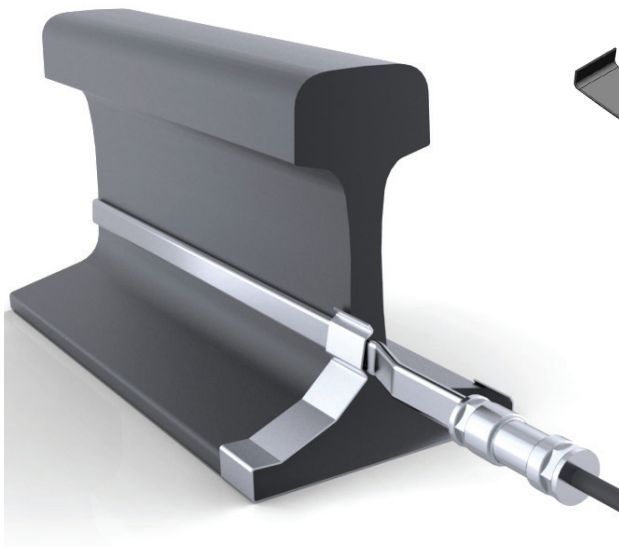
SPECTRUM TRACK SWITCH HEATERS RAIL HEATERS AND CRIB HEATERS

QUALITY | RELIABILITY | LIFE CYCLE ECONOMICS

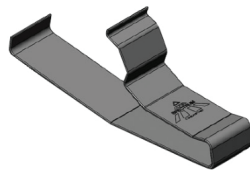
**PROVEN, LEADING-EDGE TECHNOLOGY.
24-HOUR SHIPPING ON STANDARD SIZES.
TRACK SWITCH HEATERS ARE IN STOCK.**

Spectrum Track Switch Heaters

We offer you proven, leading-edge technology in track switch heaters and stock standard sizes of rail heaters and crib heaters to give you a superior product and quick shipment. We ensure high reliability and take quality seriously. Discover the Spectrum difference.



Spectrum Flat-Jacket Snow Melter with SnapTite Rail Clip.



SnapTite Rail Clip
Part No. RRSC-FJ-SP



Bolt-On Rail Clip
Part No. RRSC-FJ-SLOT

SnapTite Rail Clip

Easy Installation- No special tools required, snaps onto base of rail with simple hand pressure or hammer. Typically installed on the outside of the rail.

Safety First- Greatly reduces the possibility of a pinch point and flying metal.

Bolt-On Rail Clip

Installation- Typically installed on the inside of the rail when solid braces prevent the installation on the outside of the rail or if the preference is to install the flat-jacket snow melter on the inside. Clip can also be welded on.

Flat-Jacket Snow Melters

Flat Profile Design- 570% greater contact to rail surface.

Heat Output- Available in 300 w/ft and 500 w/ft by request.

Industry Leading Lengths- Up to 34 feet with NO SPLICE.

Maximum Moisture Resistance- Chemically treated Magnesium oxide.

Single Ended Termination- Quick and easy installation.

24-Hour Shipping on Standard Sizes- Lengths of 8ft., 16ft., 18ft., 26ft. and 34ft., in 240 and 480 Volts.

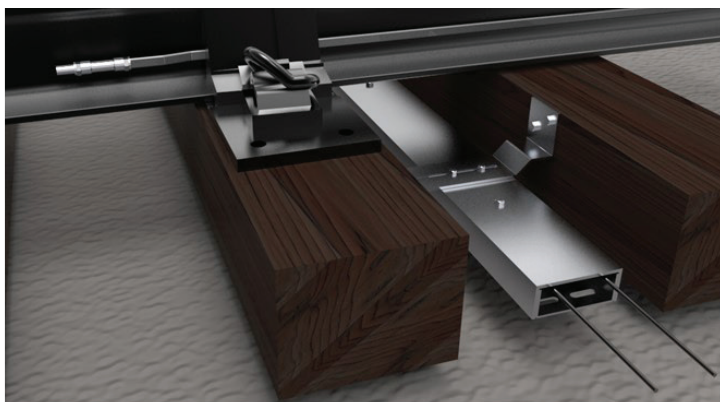
Additional Lengths- Also available in 14.5ft. in 480V.

SPECTRUM TRACK SWITCH HEATERS

RAIL HEATERS AND CRIB HEATERS

Crib Heaters

Eliminate ice and snow at the critical crib area of the switch by installing a Spectrum Crib Heater. Also known as pan or ballast heaters, they heat the movable parts of the switch machine and improve operation. Crib heaters are often installed together with flat-jacket snow melters for a more complete heating solution.



Spectrum Crib Heater

All Aluminum construction.
 Standard Length: 8ft.
 Other Lengths: 10ft. and custom by request.
 15ft. leads.
 Low 1" profile.
 240, 480, 600 Volts.
 2,400W (8ft.) and 3,000W (10ft.).
 Vented element protection plate.
 24-Hour shipping of standard size.

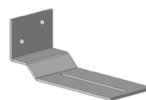
Flat-Jacket Snow Melter Buyer's Guide

Part Number	Wattage	Voltage	No. of Clips Needed	Recommended Turnout Size
FJ-480-8	2,400	480V	5	Moving Rail
FJ-480-14.5	4,350	480V	9	#8,9,10,11
FJ-480-16	4,800	480V	10	#8,9,10,11
FJ-480-500-16	8,000	480V	10	#8,9,10,11
FJ-480-18	5,200	480V	11	#8,9,10,11
FJ-480-26	7,600	480V	16	#12,15
FJ-480-34	9,600	480V	21	#20,24

Part Number	Wattage	Voltage	No. of Clips Needed	Recommended Turnout Size
FJ-240-8	2,400	240V	5	Moving Rail
FJ-240-16	4,800	240V	10	#8,9,10,11
FJ-240-18	5,200	240V	11	#8,9,10,11
FJ-240-26	7,600	240V	16	#12,15
FJ-240-34	9,600	240V	21	#20,24

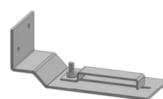
Crib Heater Brackets

Rigid design resists heaving and prevents failure. Crib Heater brackets are produced in two different options shown below.



Part No. SHBC-TIE-BRACKET

New Design: 1" wider than previous version.
 Standard: 2 Brackets per crib heater.
 Secures the crib heater in place.



Part No. SHBC-CEB

New Design for use with element only.
 Standard: 2 brackets per element.
 Optional: 3 brackets per element.