

WB WIRING BOX ELECTRIC ENCLOSURE

QUALITY | RELIABILITY | LIFE CYCLE ECONOMICS

**CUSTOMER-DRIVEN DESIGN.
ALUMINUM CONSTRUCTION.
FAST DELIVERY.**

WB Electrical Enclosure

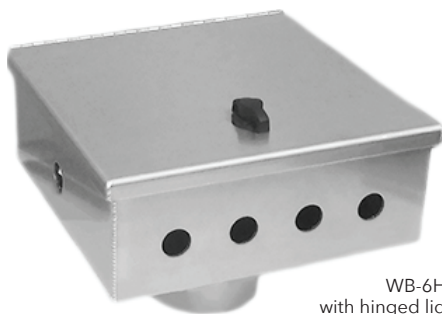
Designed as an instrument housing or junction box for electrical, electronic or pneumatic components. Provides protection from wind-driven rain, sleet, snow and dripping water.



WB-2
with bolt-on lid

Bolt-On Lid Option

The lid frame opening is flanged on all four (4) sides and sealed with a weather tight gasket. This increases the strength of the lid openings and prevents dust and liquids from entering the enclosure. Features ½" weather tight hubs and self retaining stainless bolts.



WB-6H
with hinged lid

Hinged Lid Option

The lid remains attached to the enclosure when opened for convenience. A quarter turn, wing knob lock with cam latch offers added security. Features 3" wide piano hinge.

Standard Features On All WB Electrical Enclosures

The complete enclosure is made from 0.125" thick aluminum alloy type 5052 to provide a strong, corrosion resistant construction. All seams are welded and weather tight.

WB WIRING BOX ELECTRIC ENCLOSURE

WB Optional Equipment



Junction Box Stand:
Part No. WB-100
Plate: 8" x 8" x 3/16"
Tube: 3.50"
0.125" WT
27" Long



Junction Box Stand:
Part No. WB-101
Plate: 8" x 8" x 3/16"
Tube: 3.50"
0.125" WT
27" Long
With Slot

Weather-Tite Cable Port:
Part No. WB-T624

3 dual-sided ports, rated 90 degrees. For use with copper or aluminum wires.



Wiring Box w/Hinged Lid

Part Number	Number of Ports	Lid	Dimensions
WB-0H	0	hinge	12.5" x 12.9" x 4.84"
WB-0HD	0	hinge	12.5 x 12.9" x 7.59"
WB-0TH	0	hinge	12.5" x 12.9" x 4.84"
WB-6H	6	hinge	12.5" x 12.9" x 4.59"
WB-6TH	6	hinge	12.5" x 12.9" x 4.40"

Wiring Box w/Bolt-On Lid

Part Number	Number of Ports	Lid	Dimensions
WB-2	2	bolt-on	6.87" x 8.18" x 8.34"
WB-6	6	bolt-on	12.37" x 13.69" x 4.59"